

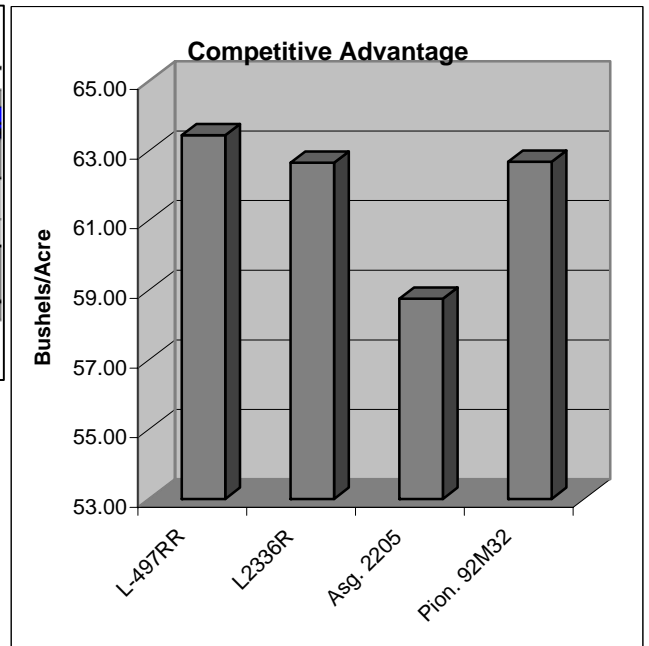
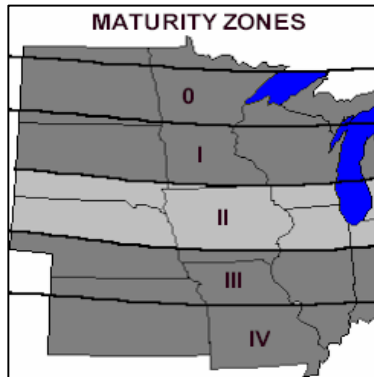
LATHAM 497RR

Brand Soybeans

Released 2002

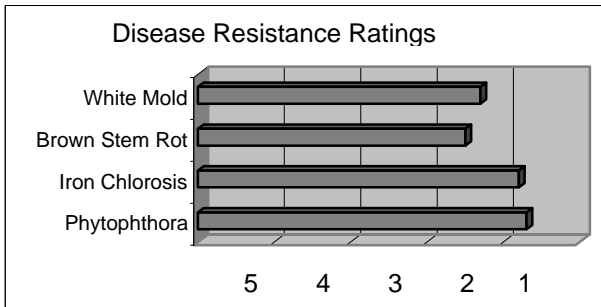
Top Qualities

- Early Group II
- Tremendous Yields!
- K-gene
- Good White Mold Tolerance
- Works Well On All Soil Types
- Great Stress Tolerance
- Excellent IDC Score



Yield data was obtained from Latham replicated research trials

Disease Resistance Ratings



General Highlights

Latham 497RR features the K-gene for Phytophthora resistance and has Iron Chlorosis tolerance. One of the best yielding lines in the industry.

Characteristics and Disease Resistance:

Maturity:	2.2	Phytophthora Resistance:	1k
Flower Color:	White	Phytophthora Tolerance:	1.7
Pubescence:	Lt. Tawny	Iron Chlorosis:	1.8
Pod Color:	Tan	Brown Stem Rot:	2.5
Hilum Color:	Brown	White Mold Tolerance:	2.3
Plant Height:	Medium	Sudden Death Syndrome:	2.1
Plant Type:	Med-Bush	Stress Tolerance:	1.5
Emergence:	1.4	Shatter Resistance:	1.1
Standability:	1.4	Row Width:	All
Soil Type:	All	No-till Suitability:	1.7
Protein Content:	3.0	SCN Gene Resistance:	N/A
Oil Content:	2.5	SCN Tolerance Rating:	N/A



Research and Development

Yield in Bushels Per Acre: Each location represents a 3-replication test.
Latham Seed Company operates one of the largest and most comprehensive soybean research farms in the upper Midwest.

2006 Research Testing

	L-497RR	L2136R	L2336R	Asg. 2205	Pion. 92M32
Alexander, IA	73.65	75.39	75.53	74.19	73.94
Paullina, IA	65.42	64.90	62.46	56.51	65.62
Beresford, SD	61.42	58.75	58.14	51.75	58.09
Janesville, WI	53.27	52.09	54.48	52.53	53.06
All Location Average	63.44	62.78	62.65	58.75	62.68

Yield Results From Farmer Superstrip Test Plots

2006 "Superstrip" Dealer Strip Trials

	L-497RR	L2336R	E2337R	L2500R	L2635R
Beaver Dam WI	53.70	53.00	55.70	49.60	50.40
Winona MN	68.00	57.90	61.90	68.10	63.10
Dolliver IA	54.30	37.80	38.80	36.90	38.50
Algona IA	53.50	52.60	56.60	57.40	61.30
Fostoria IA	58.70	57.50	59.80	60.60	56.40
Olin IA	64.50	64.40	62.00	64.20	61.50
Osage IA	63.50	57.60	59.90	62.10	60.00
Protivin IA	56.60	59.10	55.50	56.30	58.60
Greene IA	57.10	58.70	57.80	60.90	53.90
Ackley IA	66.40	71.40	66.70	68.20	71.80
Riceville IA	51.70	46.40	51.50	50.60	51.10
Dysart IA	64.40	62.10	62.40	63.30	61.20
Hudson IA	59.60	59.00	59.80	62.80	61.00
Odebolt IA	44.10	52.00	53.90	53.30	52.90
Owasa IA	56.60	53.30	51.60	52.90	60.20
Canova SD	50.60	49.70	53.30	57.90	50.30
Centerville SD	22.00	26.60	25.60	20.30	26.60
Ethan SD	40.20	46.40	52.20	50.40	45.50
Salem SD	61.90	57.00	55.90	56.70	56.10
Olivet SD	49.20	49.80	51.50	51.60	49.50
All Location Average	54.83	53.62	54.62	55.21	54.50

Positioning and Management:

Latham 497RR could be the best 2.2 maturity soybean in the industry. It is very versatile across a wide variety of soils. Plant it in your low, wet areas that have a history of Phytophthora and Iron Chlorosis. It will also perform on lighter soils and in stressful areas. It has a bushy plant type for wide rows but will work in narrow rows and drilling as well.

Technical Information

1. All Rating Scales are 1 to 5; (1 = Excellent, 5 = Poor)

2. Phytophthora Root Rot Race Resistance. Resistant varieties carry the major gene reported to be resistant to these races:

Rps1-a:	1,2,10,11,13,15-18,24,26,27
Rps1-c:	1-3,6-11,13,15,17,21,23,24,26
Rps1-k:	1-11,13-15,17,18,21,22,24,26
Rps3:	1-5,8,9,11,13,14,16,18,23,25
Rps6:	1-4,10,12,14-16,18-21,25

3. Phytophthora Field Tolerance: Although not race specific resistance, this offers general protection against serious infection.

4. Soybean Cyst Nematode Resistance - Varieties containing these genes are resistant to the following races of Soybean Cyst Nematode:

CystX	All known races
PI88788	3,6,8,9,10,12,13,14
Peking	1,3,5,6,7,8,10,15