

LATHAM L3150RV

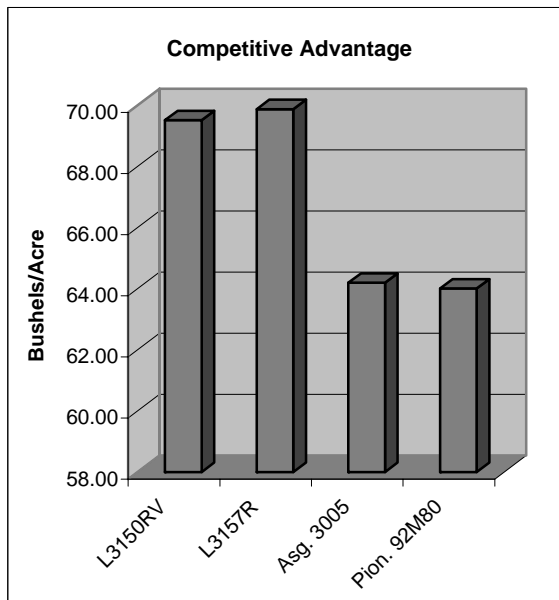
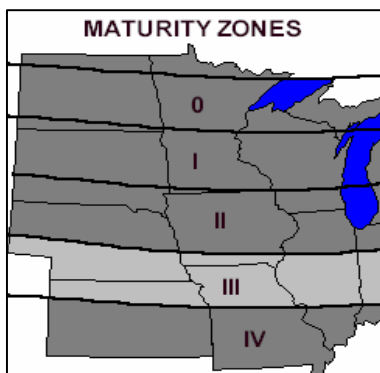


Brand Soybeans

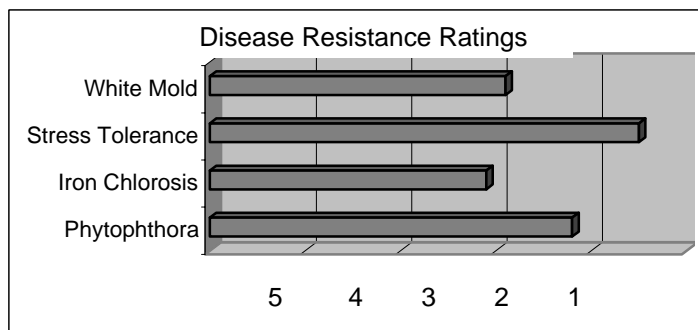
Released 2006

Top Qualities

- Early Group III
- C Gene For Phytophthora
- Roundup-Ready
- Earn More Per Acre!
- Very High Yielding!
- VISTIVE™ Low-Linolenic (<3%)



Yield data was obtained from Latham replicated research trials.



General Highlights

Once again, Latham Seed Company is one of the first companies in our trade territory to offer this exciting new soybean brand. Vistive low-linolenic soybeans offer soybean oil with lower trans-fatty acids!

Characteristics and Disease Resistance:

Maturity:	3.1	Phytophthora Resistance:	1c
Flower Color:	Purple	Phytophthora Tolerance:	2.2
Pubescence:	Tawny	Iron Chlorosis:	3.1
Pod Color:	Tan	Brown Stem Rot:	2.0
Hilum Color:	Black	White Mold Tolerance:	2.9
Plant Height:	Medium	Sudden Death Syndrome:	2.5
Plant Type:	Medium	Stress Tolerance:	1.5
Emergence:	1.3	Shatter Resistance:	1.5
Standability:	1.4	Row Width:	All
Soil Type:	All	No-till Suitability:	N/A
Protein Content:	N/A	SCN Gene Resistance:	N/A
Oil Content:	N/A	SCN Tolerance Rating:	N/A



Research and Development

Yield in Bushels Per Acre: Each location represents a 3-replication test.
Latham Seed Company operates one of the largest and most comprehensive soybean research farms in the upper Midwest.

2006 Research Trials

	L3150RV	L2900R	L3157R	Asg. 3005	Pion. 92M80
Williamsburg, IA	70.40	68.88	69.44	64.07	63.94
Hubbard, NE	61.68	61.71	60.06	49.41	60.57
Platte Center, NE	71.77	72.73	78.05	69.20	63.52
Hastings, NE	74.21	62.80	71.95	74.09	67.99
All Location Average	69.52	66.53	69.88	64.19	64.01

Yield Results From Farmer Superstrip Test Plots

2006 "Superstrip" Dealer Strip Trials

	L3150RV	L2353RV	L2780RV	E3154RV	L2359RV
Hubbard NE	72.00	79.00	73.90	70.70	74.40
Lindsay NE	71.10	66.70	70.40	66.90	67.40
Decatur NE	62.50	58.10	64.60	59.80	57.70
All Location Average	68.53	67.93	69.63	65.80	66.50

Positioning and Management

L3150RV is a tall line that performs almost anywhere. A great defensive package including C gene for Phytophthora and high top-end yield are two qualities it has to offer. Works well under irrigation as well as dry-land situations. This is a special Low-Lin Vistive line so a contract with Vistive soybean processor is required to plant L3150RV.

Technical Information

1. All Rating Scales are 1 to 5; (1 = Excellent, 5 = Poor)

2. Phytophthora Root Rot Race Resistance. Resistant varieties carry the major gene reported to be resistant to these races:

Rps1-a:	1,2,10,11,13,15-18,24,26,27
Rps1-c:	1-3,6-11,13,15,17,21,23,24,26
Rps1-k:	1-11,13-15,17,18,21,22,24,26
Rps3:	1-5,8,9,11,13,14,16,18,23,25
Rps6:	1-4,10,12,14-16,18-21,25

3. Phytophthora Field Tolerance: Although not race specific resistance, this offers general protection against serious infection.

4. Soybean Cyst Nematode Resistance - Varieties containing these genes are resistant to the following races of Soybean Cyst Nematode:

CystX	All known races
PI88788	3,6,8,9,10,12,13,14
Peking	1,3,5,6,7,8,10,15

Dec-06