

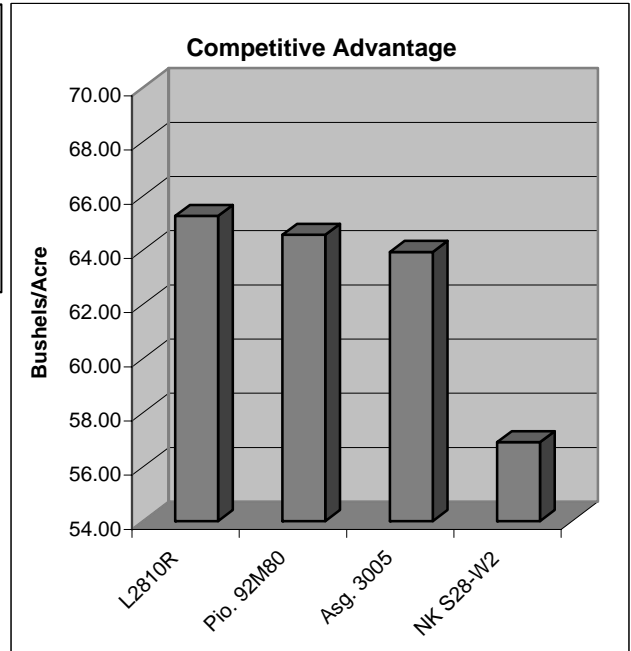
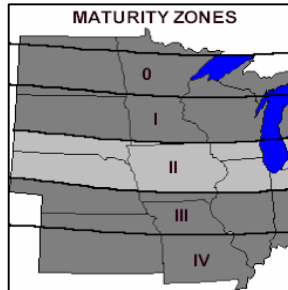
LATHAM L2810R

Brand Soybeans

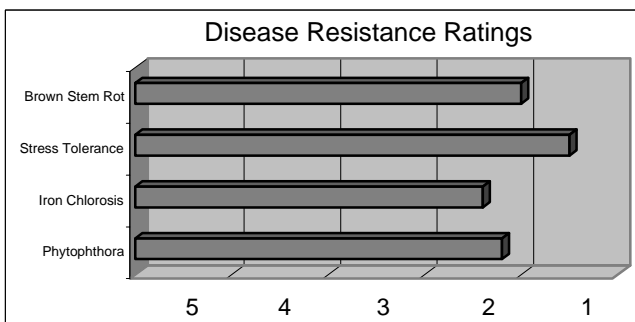
Released 2006

Top Qualities

- Late Group II
- Outstanding Yields
- Excellent Stress Tolerance
- Very Good Tolerance To Iron Chlorosis
- Handles White Mold Very Well
- Tremendous Five Year Average In Research Trials



Yield data was obtained from replicated research trials.



General Highlights

Latham L2810R is a new soybean line that has been in our research trials for five years with tremendous success. It's #1 virtue is consistent yield; placing in the top five each year in our program. We finally have enough seed to release some to the industry!

Characteristics and Disease Resistance:

Maturity:	2.8	Phytophthora Resistance:	N/A
Flower Color:	White	Phytophthora Tolerance:	2.2
Pubescence:	Tawny	Iron Chlorosis:	2.4
Pod Color:	Tan	Brown Stem Rot:	2.0
Hilum Color:	Imp. Black	White Mold Tolerance:	2.1
Plant Height:	Med. Tall	Sudden Death Syndrome:	2.3
Plant Type:	Medium	Stress Tolerance:	1.5
Emergence:	1.1	Shatter Resistance:	1.0
Standability:	1.4	Row Width:	All
Soil Type:	All	No-till Suitability:	1.6
Protein Content:	N/A	SCN Gene Resistance:	N/A
Oil Content:	N/A	SCN Tolerance Rating:	N/A



Research and Development

Yield in Bushels Per Acre: Each location represents a 3-replication test.

Latham Seed Company operates one of the largest and most comprehensive soybean research farms in the upper Midwest.

2006 Research Trials

	Latham L2810R	Asg. 3305	Pio. 92M80	Asg. 3005	NK S28-W2
Alexander, IA	61.98	65.83	63.94	62.90	47.49
Williamsburg, IA	69.42	62.18	66.80	64.07	56.45
Hubbard, NE	53.96	66.09	60.57	49.41	46.41
Platte Center, NE	73.35	67.31	63.52	69.20	67.41
Hastings, NE	67.59	64.30	67.99	74.09	66.79
All Location Ave.	65.26	65.14	64.56	63.93	56.91

Yield Results From Farmer Superstrip Test Plots

Location	L2810R	L2900R	L2775R	L-967RR	L3157R
Meckling, SD	61.90	57.70	59.20	59.20	55.00
Pilger, NE	65.00	63.30	62.80	59.70	60.60
Hooper, NE	51.10	57.60	50.40	55.90	62.60
Kennard NE	48.20	49.60	52.00	47.80	48.20
Columbus, NE	60.30	61.00	64.10	57.00	60.50
Leigh, NE	53.00	58.80	56.00	59.80	61.90
West Point NE	59.10	63.40	58.90	60.00	54.10
Friend, NE	69.60	71.60	68.60	71.00	68.80
Breda, IA	60.90	63.50	61.50	61.00	66.10
Williamsburg IA	67.30	66.80	65.10	61.50	64.80
Vail IA	77.30	77.40	75.60	77.40	78.30
Odebolt IA	51.90	56.20	51.30	51.90	58.40
Audubon, IA	44.60	46.80	45.10	41.00	46.30
Schleswig IA	69.60	72.20	71.30	72.00	66.50
Villisca IA	63.00	65.80	62.70	56.00	57.30
All Location Ave.	60.19	62.11	60.31	59.41	60.63

Positioning and Management

L2810R is a line that will perform almost anywhere. Place it on your better ground for maximum yields. It should do very well under irrigation but may not carry the plant height needed for those very light, sandy, dryland fields.

Technical Information

1. All Rating Scales are 1 to 5; (1 = Excellent, 5 = Poor)

2. Phytophthora Root Rot Race Resistance. Resistant varieties carry the major gene reported to be resistant to these races:

Rps1-a:	1,2,10,11,13,15-18,24,26,27
Rps1-c:	1-3,6-11,13,15,17,21,23,24,26
Rps1-k:	1-11,13-15,17,18,21,22,24,26
Rps3:	1-5,8,9,11,13,14,16,18,23,25
Rps6:	1-4,10,12,14-16,18-21,25

3. Phytophthora Field Tolerance: Although not race specific resistance, this offers general protection against serious infection.

4. Soybean Cyst Nematode Resistance - Varieties containing these genes are resistant to the following races of Soybean Cyst Nematode:

PI88788	3,6,8,9,10,12,13,14
Peking	1,3,5,6,7,8,10,15