

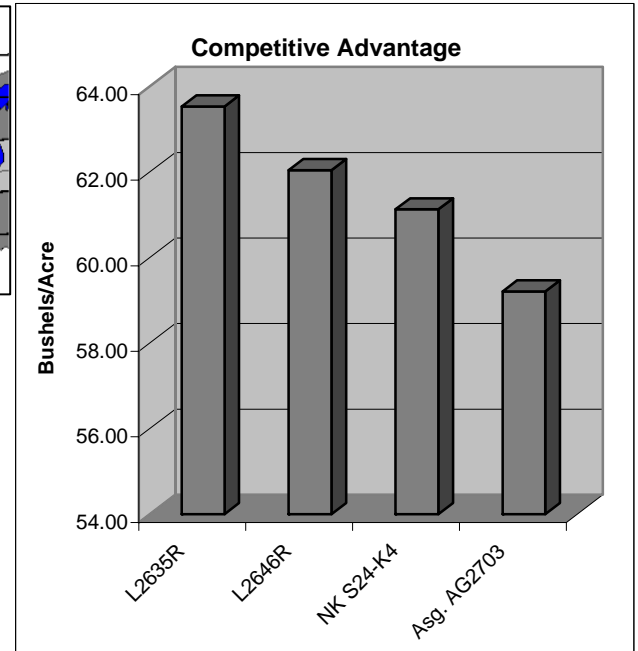
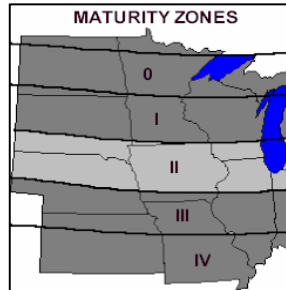
LATHAM L2635R

Brand Soybeans

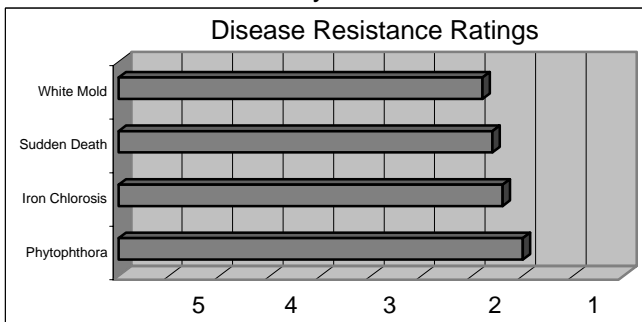
Released 2005

Top Qualities

- Mid Group II
- Tall, Growthy Line
- Great East To West
- C Gene For Phytophthora
- Great On Iron Chlorosis
- New Genetic Line
- Excellent Stress Variety



Yield data was obtained from Latham replicated research trials.



General Highlights

L2635R is a new soybean that has great IDC tolerance and is a very tall, tough plant. It has tremendous performance as well as a first rate defensive package.

Characteristics and Disease Resistance:

Maturity:	2.6	Phytophthora Resistance:	1c
Flower Color:	Purple	Phytophthora Tolerance:	2.0
Pubescence:	Gray	Iron Chlorosis:	2.2
Pod Color:	Tan	Brown Stem Rot:	2.9
Hilum Color:	Imp. Black	White Mold Tolerance:	2.4
Plant Height:	Tall!	Sudden Death Syndrome:	2.3
Plant Type:	Medium	Stress Tolerance:	1.5
Emergence:	1.5	Shatter Resistance:	1.5
Standability:	1.8	Row Width:	All
Soil Type:	All	No-till Suitability:	2.1
Protein Content:	3.0	SCN Gene Resistance:	N/A
Oil Content:	2.5	SCN Tolerance Rating:	N/A



Research and Development

Yield in Bushels Per Acre: Each location represents a 3-replication test.

Latham Seed Company operates one of the largest and most comprehensive soybean research farms in the upper Midwest.

2006 Research Trials

	L2635R	L2646R	L2775R	Asg. AG2703	NK S24-K4
Alexander, IA	68.64	67.50	62.21	58.92	64.19
Breda, IA	67.89	69.61	62.86	64.30	58.97
Williamsburg, IA	65.95	65.63	63.51	61.41	60.69
Beresford, SD	55.38	58.18	58.50	56.27	57.70
Hubbard, NE	59.78	49.29	59.49	64.72	54.47
All Location Ave.	63.53	62.04	61.31	61.12	59.20

Yield Results From Farmer Superstrip Test Plots

2006 "Superstrip" Dealer Strip Trials

	L2635R	L2646R	L2336R	E2337R	L2500R
Beaver Dam, WI	50.40	53.20	53.00	55.70	49.60
Winona, MN	63.10	67.30	57.90	61.90	68.10
Pilger NE	61.30	59.60	63.30	64.00	59.60
Arthur, IA	61.60	51.60	58.30	63.90	60.00
Algona, IA	61.30	63.80	52.60	56.60	57.40
Fostoria, IA	56.40	56.80	57.50	59.80	60.60
Olin IA	61.50	65.80	64.40	62.00	64.20
Osage, IA	60.00	64.30	57.60	59.90	62.10
Protivin, IA	58.60	60.50	59.10	55.50	56.30
Greene, IA	53.90	56.70	58.70	57.80	60.90
Ackley, IA	71.80	70.40	71.40	66.70	68.20
Riceville, IA	51.10	53.90	46.40	51.50	50.60
Dysart, IA	61.20	61.40	62.10	62.40	63.30
Hudson, IA	61.00	62.60	59.00	59.80	62.80
Odebolt, IA	52.90	52.00	52.00	53.90	53.30
Owasa, IA	60.20	55.70	53.30	51.60	52.90
Canova, SD	50.30	49.70	49.70	53.30	57.90
Ethan, SD	45.50	43.20	46.40	52.20	50.40
Salem, SD	56.10	60.40	57.00	55.90	56.70
Olivet, SD	49.50	51.70	49.80	51.50	51.60
Corunna, MI	51.60	54.10	46.90	50.60	46.50
All Location Ave.	57.11	57.84	56.02	57.45	57.76

Positioning and Management

Latham L2635R has the old L-640 in its genetic background. It is a big, tall, rugged variety with excellent plant health. Its most notable feature might be that it has awesome dry weather stress. Look for this line to make some waves in the future!

Technical Information

1. All Rating Scales are 1 to 5; (1 = Excellent, 5 = Poor)

2. Phytophthora Root Rot Race Resistance. Resistant varieties carry the major gene reported to be resistant to these races:

Rps1-a:	1,2,10,11,13,15-18,24,26,27
Rps1-c:	1-3,6-11,13,15,17,21,23,24,26
Rps1-k:	1-11,13-15,17,18,21,22,24,26
Rps3:	1-5,8,9,11,13,14,16,18,23,25
Rps6:	1-4,10,12,14-16,18-21,25

3. Phytophthora Field Tolerance: Although not race specific resistance, this offers general protection against serious infection.

4. Soybean Cyst Nematode Resistance - Varieties containing these genes are resistant to the following races of Soybean Cyst Nematode:

CystX	All known races
PI88788	3,6,8,9,10,12,13,14
Peking	1,3,5,6,7,8,10,15

