

Latham L2620RX

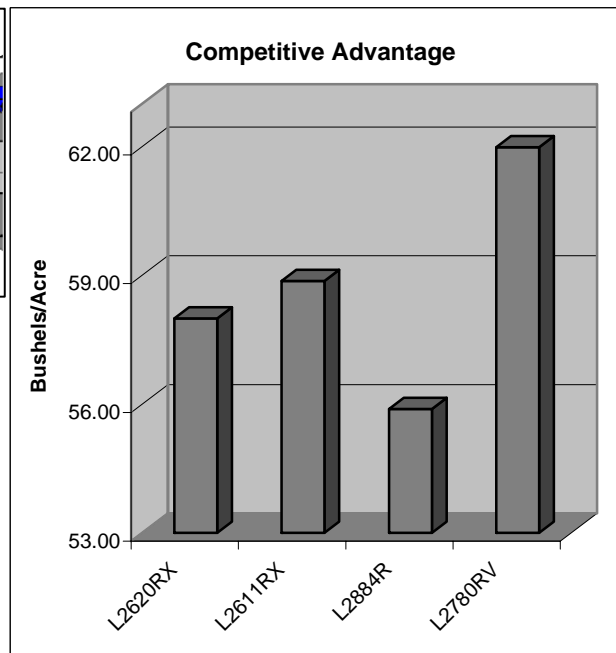
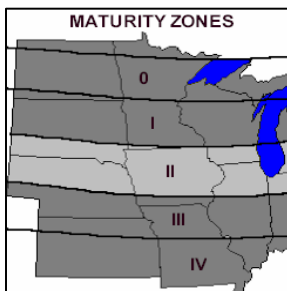


Brand Soybeans

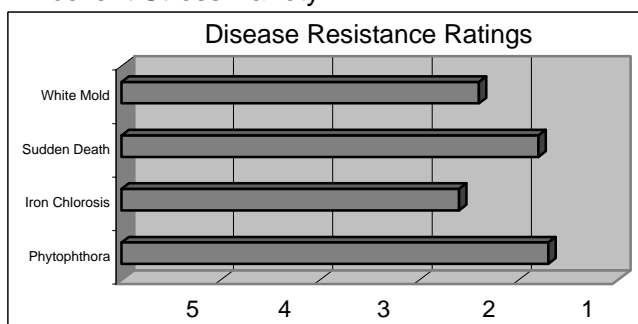
Released 2004

Top Qualities

- Mid Group II
- CYSTX!
- Attractive Plant Type
- K-gene for Phytophthora Resistance
- Best Cyst Resistance You Can Get
- Very Tolerant To SDS
- Excellent Stress Variety



Yield data was obtained from Latham replicated research trials.



General Highlights

Latham L2620RX is the first CystX line to earn a Latham Brand name. It has great SCN resistance as well as great performance in the field. IDC tolerance is good unless under extreme conditions.

Characteristics and Disease Resistance:

Maturity:	2.6	Phytophthora Resistance:	Rps1-K
Flower Color:	Purple	Phytophthora Tolerance:	1.7
Pubescence:	Tawny	Iron Chlorosis:	2.6
Pod Color:	Tan	Brown Stem Rot:	N/A
Hilum Color:	Black	White Mold Tolerance:	2.4
Plant Height:	Med-Tall	Sudden Death Syndrome:	1.8
Plant Type:	Medium	Stress Tolerance:	1.5
Emergence:	1.5	Shatter Resistance:	2.0
Standability:	1.7	Row Width:	All
Soil Type:	All	No-till Suitability:	2.0
Protein Content:	2.5	SCN Gene Resistance:	CystX
Oil Content:	3.0	SCN Tolerance Rating:	1.3

Research and Development

Yield in Bushels Per Acre: Each location represents a 3-replication test.

Latham Seed Company operates one of the largest and most comprehensive soybean research farms in the upper Midwest.

2006 Research Trials

	L2620RX	L-688RRN	L2611RX	L2884R	L2780RV
Alexander, IA	57.70	72.10	62.97	62.54	62.32
Breda, IA	61.89	62.99	62.94	57.31	70.24
Oskaloosa, IA	56.34	56.39	51.73	55.70	61.22
Gibson City, IL	67.95	65.95	71.25	66.00	69.40
Gilbert, IA	46.09	42.98	45.44	37.88	46.75

All Location Ave. 57.99 60.08 58.87 55.89 61.99

Yield Results From Farmer Superstrip Test Plots

2006 "Superstrip" Dealer Strip Trials

	L2620RX	L2611RX	L2884R	L2987R
Arlington IL	47.60	50.90	54.40	49.00
Adel IA	50.40	51.90	55.10	54.50
Ames IA	38.50	31.40	30.50	28.80
Whiting IA	34.80	37.40	45.20	47.10

All Location Ave. 42.83 42.90 46.30 44.85

Positioning and Management

L2620RX is a proven line with the revolutionary new Cyst nematode resistance called CystX. It works well in all soil types and has a good defensive package. Avoid areas that have a history of severe iron chlorosis.

Technical Information

1. All Rating Scales are 1 to 5; (1 = Excellent, 5 = Poor)

2. Phytophthora Root Rot Race Resistance. Resistant varieties carry the major gene reported to be resistant to these races:

Rps1-a:	1,2,10,11,13,15-18,24,26,27
Rps1-c:	1-3,6-11,13,15,17,21,23,24,26
Rps1-k:	1-11,13-15,17,18,21,22,24,26
Rps3:	1-5,8,9,11,13,14,16,18,23,25
Rps6:	1-4,10,12,14-16,18-21,25

3. Phytophthora Field Tolerance: Although not race specific resistance, this offers general protection against serious infection.

4. Soybean Cyst Nematode Resistance - Varieties containing these genes are resistant to the following races of Soybean Cyst Nematode:

CystX	All known races
PI88788	3,6,8,9,10,12,13,14
Peking	1,3,5,6,7,8,10,15

Dec-06