

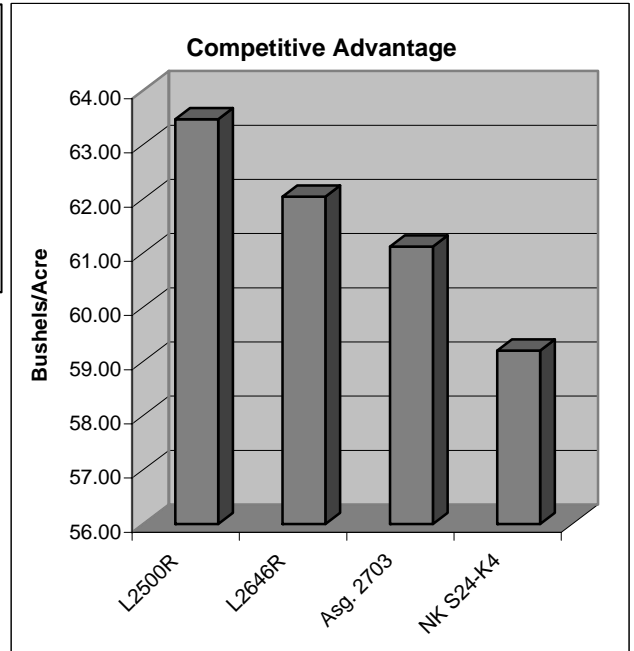
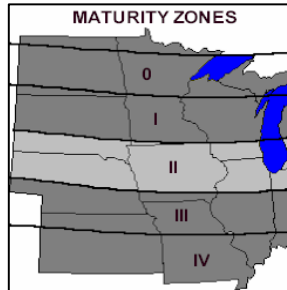
LATHAM L2500R

Brand Soybeans

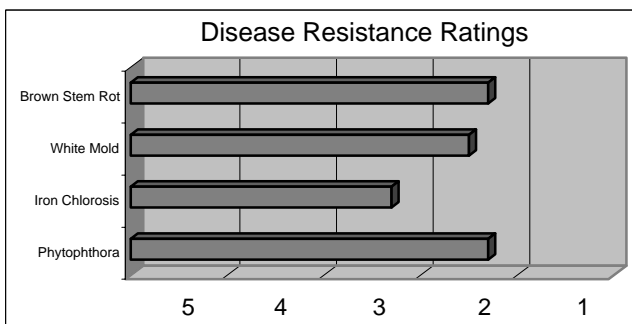
Released 2006

Top Qualities

- Mid Group II
- Excellent Yields
- Racehorse Type Line
- Yield, Yield, Yield
- Great Genetic Family Background



Yield data was obtained from replicated research trials.



General Highlights

L2500R is a racehorse type line that has tremendous top end yield. It has some heavy hitters in its genetic background such as L-660, L-662 and L-640!

Characteristics and Disease Resistance:

Maturity:	2.5	Phytophthora Resistance:	----
Flower Color:	Purple	Phytophthora Tolerance:	2.3
Pubescence:	Lt. Tawny	Iron Chlorosis:	3.3
Pod Color:	Tan	Brown Stem Rot:	2.3
Hilum Color:	Brown	White Mold Tolerance:	2.5
Plant Height:	Medium-Tall	Sudden Death Syndrome:	----
Plant Type:	Medium-Bush	Stress Tolerance:	----
Emergence:	1.1	Shatter Resistance:	1.0
Standability:	1.4	Row Width:	All
Soil Type:	All	No-till Suitability:	1.9
Protein Content:	3.0	SCN Gene Resistance:	N/A
Oil Content:	2.5	SCN Tolerance Rating:	N/A



Research and Development

Yield in Bushels Per Acre: Each location represents a 3-replication test.
Latham Seed Company operates one of the largest and most comprehensive soybean research farms in the upper Midwest.

2006 Research Trials

	L2500R	L2646R	L2775R	Asg. 2703	NK S24-K4
Alexander, IA	62.38	67.50	62.21	58.92	64.19
Breda, IA	72.80	69.61	62.86	64.30	58.97
Williamsburg, IA	63.86	65.63	63.51	61.41	60.69
Beresford, SD	61.24	58.18	58.50	56.27	57.70
Hubbard, NE	57.09	49.29	59.49	64.72	54.47
All Location Ave.	63.47	62.04	61.31	61.12	59.20

Yield Results From Farmer Superstrip Test Plots

2006	L2500R	497RR	L2336R	L2635R	L2646R
Beaver Dam, WI	49.60	53.70	53.00	50.40	53.20
Winona, MN	68.10	68.00	57.90	63.10	67.30
Arthur, IA	60.00	50.70	58.30	61.60	51.60
Algona, IA	57.40	53.50	52.60	61.30	63.80
Fostoria, IA	60.60	58.70	57.50	56.40	56.80
Olin, IA	64.20	64.50	64.40	61.50	65.80
Osage, IA	62.10	63.50	57.60	60.00	64.30
Protivin, IA	56.30	56.60	59.10	58.60	60.50
Greene, IA	60.90	57.10	58.70	53.90	56.70
Ackley, IA	68.20	66.40	71.40	71.80	70.40
Riceville, IA	50.60	51.70	46.40	51.10	53.90
Dysart, IA	63.30	64.40	62.10	61.20	61.40
Hudson, IA	62.80	59.60	59.00	61.00	62.60
Odebolt, IA	53.30	44.10	52.00	52.90	52.00
Owasa, IA	52.90	56.60	53.30	60.20	55.70
Canova, SD	57.90	50.60	49.70	50.30	49.70
Ethan, SD	50.40	40.20	46.40	45.50	43.20
Salem, SD	56.70	61.90	57.00	56.10	60.40
Olivet, SD	51.60	49.20	49.80	49.50	51.70
Corunna, MI	46.50	31.50	46.90	51.60	54.10
All Location Ave.	57.67	55.13	55.66	56.90	57.76

Positioning and Management

L2500R is a line that will perform almost anywhere. Place it on your better ground for maximum yields. Avoid areas with a history of Iron Chlorosis problems.

Technical Information

1. All Rating Scales are 1 to 5; (1 = Excellent, 5 = Poor)

2. Phytophthora Root Rot Race Resistance. Resistant varieties carry the major gene reported to be resistant to these races:

Rps1-a:	1,2,10,11,13,15-18,24,26,27
Rps1-c:	1-3,6-11,13,15,17,21,23,24,26
Rps1-k:	1-11,13-15,17,18,21,22,24,26
Rps3:	1-5,8,9,11,13,14,16,18,23,25
Rps6:	1-4,10,12,14-16,18-21,25

3. Phytophthora Field Tolerance: Although not race specific resistance, this offers general protection against serious infection.

4. Soybean Cyst Nematode Resistance - Varieties containing these genes are resistant to the following races of Soybean Cyst Nematode:

PI88788	3,6,8,9,10,12,13,14
Peking	1,3,5,6,7,8,10,15