

# Latham E2238RV

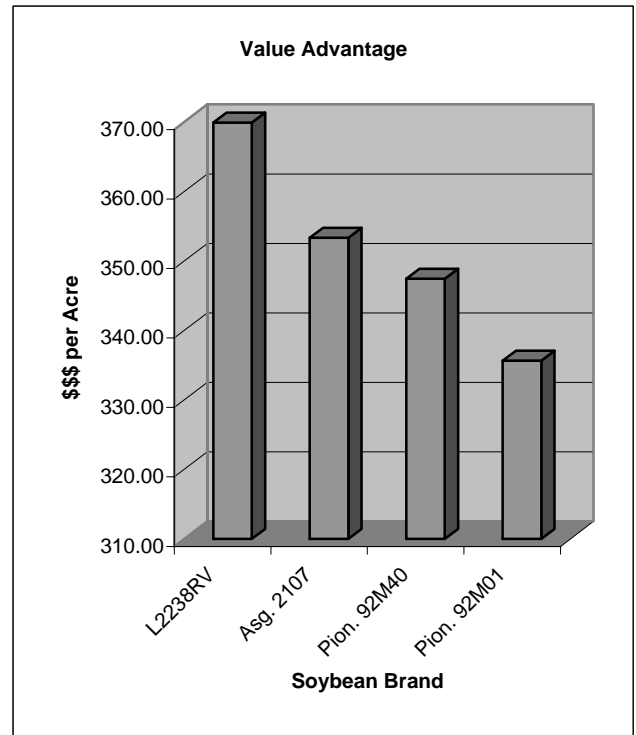
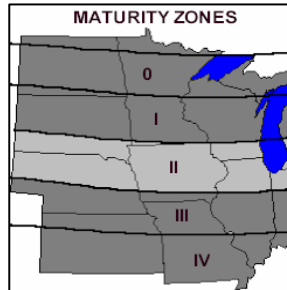


Brand Soybeans

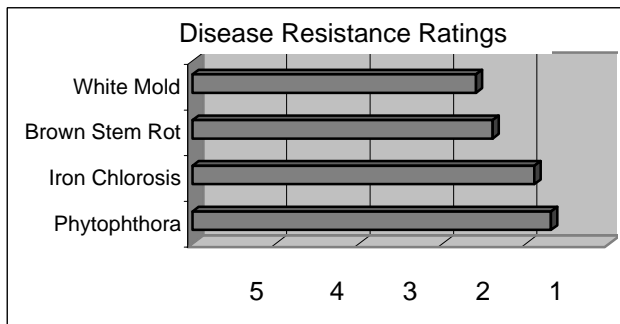
Released 2006

## Top Qualities

- Early Group II
- New Genetics!
- IDC tolerant
- Great Yields!
- C-gene For Phytophthora
- VISTIVE™ Low-Linolenic (<3%)



Once again, Latham Seed Company is one of the first companies in our trade territory to offer this exciting new soybean brand. Vistive low-linolenic soybeans offer soybean oil with lower trans-fatty acids!



## Characteristics and Disease Resistance:

Maturity:	2.2	Phytophthora Resistance:	1c
Flower Color:	Purple	Phytophthora Tolerance:	1.7
Pubescence:	Gray	Iron Chlorosis:	1.9
Pod Color:	Brown	Brown Stem Rot:	2.4
Hilum Color:	Imp. Black	White Mold Tolerance:	2.6
Plant Height:	Medium	Sudden Death Syndrome:	N/A
Plant Type:	Medium	Stress Tolerance:	2.0
Emergence:	1.5	Shatter Resistance:	2.0
Standability:	2.0	Row Width:	All
Soil Type:	All	No-till Suitability:	2.5
Protein Content:	N/A	SCN Gene Resistance:	P188788
Oil Content:	N/A	SCN Tolerance Rating:	2.0



# Research and Development

## Value Comparisons

Brand	Income/Acre	Bu/Ac
<b>L2238RV</b>	<b>\$369.91</b>	<b>52.47</b>
L2353RV	\$353.21	50.10
Asg. 2107	\$353.34	54.36
Pion. 92M40	\$347.43	53.45
Pion. 92M01	\$335.66	51.64
NK S23Z3	\$326.30	50.20

Income per acre based on yields from replicated research trials.

Prices based on \$6.50/bushel market for #2 yellow soybeans.

Vistive Soybeans = \$7.05/bushel

Variety	Yield bu/A	Return
<b>L2238RV</b>	<b>50.95</b>	<b>\$384.67</b>
AG2406	53.50	\$374.50
P92M40	52.91	\$370.37
NK S25-B9	52.58	\$368.06
L2353RV	48.12	\$363.31

Base Soybean Price \$7/bu, Vistive Premium \$0.55/bu

## Positioning and Management

L2238RV is a new Vistive line that is resistant to SCN and has terrific Iron Chlorosis tolerance! This line will perform in any type of soil. It has the C gene for Phytophthora tolerance. Works well in all row widths and tillage practices.

---

### Technical Information

- All Rating Scales are 1 to 5; (1 = Excellent, 5 = Poor)
- Phytophthora Root Rot Race Resistance. Resistant varieties carry the major gene reported to be resistant to these races:
  - Rps1-a: 1,2,10,11,13,15-18,24,26,27
  - Rps1-c: 1-3,6-11,13,15,17,21,23,24,26
  - Rps1-k: 1-11,13-15,17,18,21,22,24,26
  - Rps3: 1-5,8,9,11,13,14,16,18,23,25
  - Rps6: 1-4,10,12,14-16,18-21,25
- Phytophthora Field Tolerance: Although not race specific resistance, this offers general protection against serious infection.
- Soybean Cyst Nematode Resistance - Varieties containing these genes are resistant to the following races of Soybean Cyst Nematode:
  - CystX All known races
  - PI88788 3,6,8,9,10,12,13,14
  - Peking 1,3,5,6,7,8,10,15

Jan 07