

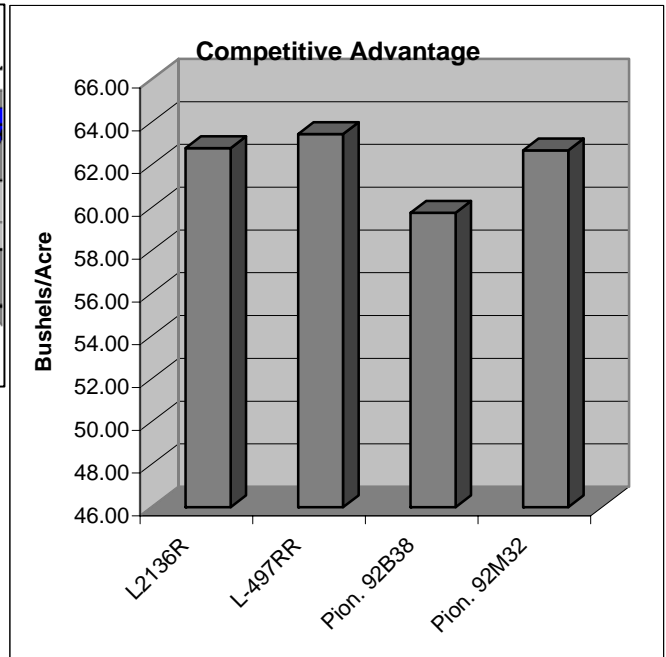
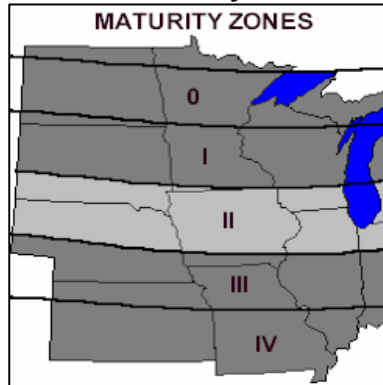
LATHAM L2136R

Brand Soybeans

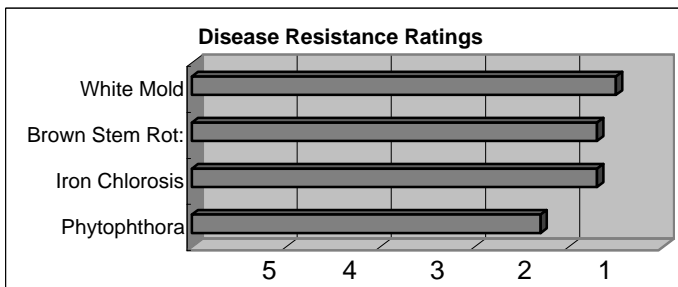
Released 2003

Top Qualities

- Big Yields!
- Great Emergence
- Attractive Plant Type
- Unbelievable Iron Chlorosis Tolerance
- Works Well On All Soil Types
- Excellent White Mold Tolerance
- Moderate Resistance To Brown Stem Rot



Yield data was obtained from Latham replicated research trials



General Highlights

Latham L2136R is a very high yielding soybean with a defensive package second to none. It has some of the best Iron Chlorosis tolerance we've seen and super tolerance to white mold and Brown Stem Rot.

Characteristics and Disease Resistance:

Maturity:	2.1	Phytophthora Resistance:	----
Flower Color:	White	Phytophthora Tolerance:	2.3
Pubescence:	Tawny	Iron Chlorosis:	1.7
Pod Color:	Tan	Brown Stem Rot:	1.7
Hilum Color:	Yellow	White Mold Tolerance:	1.5
Plant Height:	Medium	Sudden Death Syndrome:	2.2
Plant Type:	Medium	Stress Tolerance:	1.5
Emergence:	1.3	Shatter Resistance:	2.0
Standability:	1.8	Row Width:	All
Soil Type:	All	No-till Suitability:	1.5
Protein Content:	3.0	SCN Gene Resistance:	N/A
Oil Content:	2.5	SCN Tolerance Rating:	N/A



Research and Development

Yield in Bushels Per Acre: Each location represents a 3-replication test.

Latham Seed Company operates one of the largest and most comprehensive soybean research farms in the upper Midwest.

2006 Research Trials

	L2136R	L-497RR	L2336R	Pion. 92B38	Pion. 92M32
Alexander, IA	75.39	73.65	75.53	68.33	73.94
Paullina, IA	64.9	65.42	62.46	61.43	65.62
Beresford, SD	58.75	61.42	58.14	55.15	58.09
Janesville, IA	52.09	53.27	54.48	54.14	53.06
All Location Ave.	62.78	63.44	62.65	59.76	62.68

Yield Results From Farmer Superstrip Test Plots

2006 "Superstrip" Dealer Strip Trials

	L2136R	L1936R	E1950R	E1964R	L2038R
Rubicon WI	70.10	62.10	62.60	58.70	69.20
Hilbert WI	60.40	57.80	52.00	53.00	58.70
Beaver Dam WI	51.10	54.30	53.20	56.70	52.70
Wesby WI	51.10	44.10	49.90	53.10	48.90
Winona MN	64.60	63.20	59.60	59.90	59.40
Mt. Lake MN	59.10	56.80	55.20	54.00	64.20
Montevideo MN	38.40	40.00	39.90	39.00	42.30
Heron Lake MN	39.70	25.90	37.50	32.40	50.50
SleepyEye MN	56.30	54.60	56.30	52.50	65.40
Alden MN	46.20	44.70	47.80	43.80	46.30
Floyd IA	57.10	55.00	52.80	52.60	53.80
Letcher SD	49.40	51.60	49.90	45.90	46.20
All Location Ave.	53.63	50.84	51.39	50.13	54.80

Positioning and Management

Latham L2136R is a very high yielding soybean that has excellent tolerance to stress. It has great Iron Chlorosis tolerance to go into your fields with a history of that disease. This line also carries very good tolerance to White Mold and Brown Stem Rot. Works well on all soil types and all row widths.

Technical Information

1. All Rating Scales are 1 to 5; (1 = Excellent, 5 = Poor)

2. Phytophthora Root Rot Race Resistance. Resistant varieties carry the major gene reported to be resistant to these races:

Rps1-a:	1,2,10,11,13,15-18,24,26,27
Rps1-c:	1-3,6-11,13,15,17,21,23,24,26
Rps1-k:	1-11,13-15,17,18,21,22,24,26
Rps3:	1-5,8,9,11,13,14,16,18,23,25
Rps6:	1-4,10,12,14-16,18-21,25

3. Phytophthora Field Tolerance: Although not race specific resistance, this offers general protection against serious infection.

4. Soybean Cyst Nematode Resistance - Varieties containing these genes are resistant to the following races of Soybean Cyst Nematode:

CystX	All known races
PI88788	3,6,8,9,10,12,13,14
Peking	1,3,5,6,7,8,10,15

Dec-06