

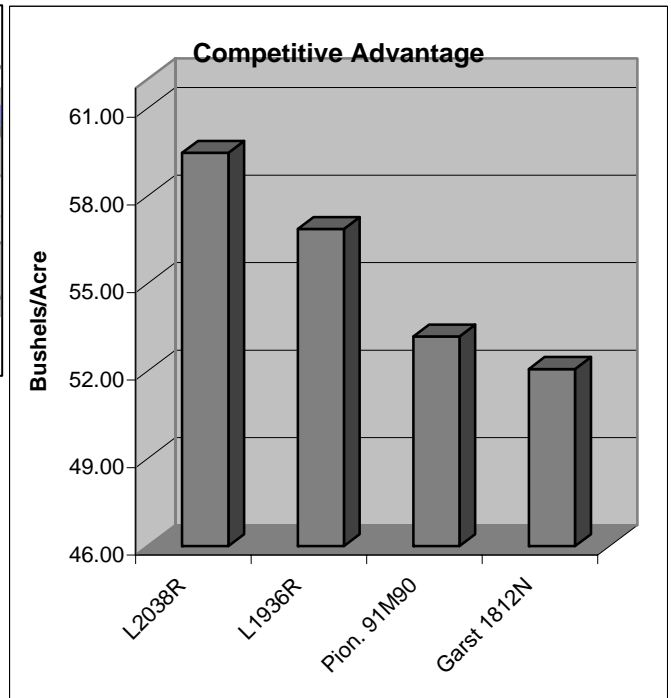
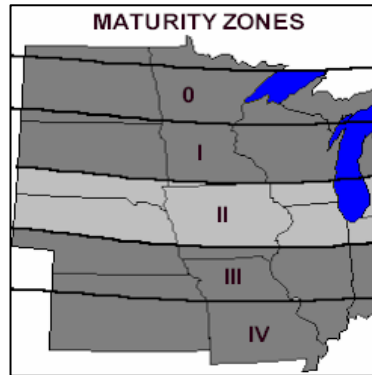
# LATHAM L2038R

Brand Soybeans

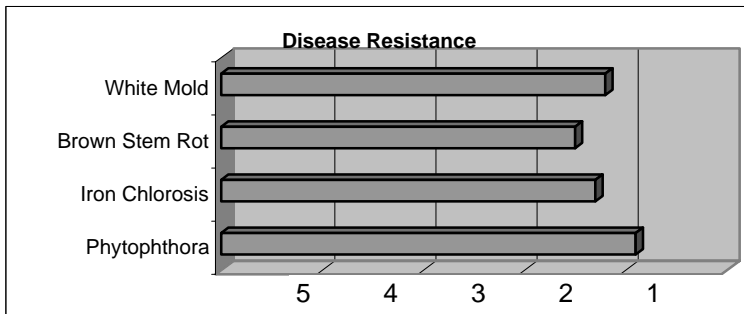
Released 2003

## Top Qualities

- Early Group II
- RR and Cyst Resistant
- K-gene for Phytophthora
- Great Iron Chlorosis Tolerance
- Very Good Sudden Death Syndrome Tolerance
- Good All Around Disease Package



Yield data was obtained from Latham replicated research trials



## General Highlights

L2038R is our top selling soybean line. It combines great yield with strong SCN resistance.

## Characteristics and Disease Resistance:

Maturity:	2.0	Phytophthora Resistance:	1k
Flower Color:	Purple	Phytophthora Tolerance:	1.9
Pubescence:	Gray	Iron Chlorosis:	2.3
Pod Color:	Tan	Brown Stem Rot:	2.5
Hilum Color:	Imp. Black	White Mold Tolerance:	2.2
Plant Height:	Medium	Sudden Death Syndrome:	2.0
Plant Type:	Medium	Stress Tolerance:	1.5
Emergence:	1.2	Shatter Resistance:	1.5
Standability:	1.5	Row Width:	All
Soil Type:	All	No-till Suitability:	1.8
Protein Content:	3.0	SCN Gene Resistance:	PI88788
Oil Content:	2.0	SCN Tolerance Rating:	2.1



## **Research and Development**

Yield in Bushels Per Acre: Each location represents a 3-replication test.  
Latham Seed Company operates one of the largest and most comprehensive soybean research farms in the upper Midwest.

### **2006 (Test 921)**

		<b>L2038R</b>	<b>L1936R</b>	<b>Asg. AG1903</b>	<b>Pion. 91M90</b>	<b>Garst 1812N</b>
Alexander, IA	Low SCN	68.80	62.05	65.28	60.90	58.50
Whittemore, IA	Mod SCN	69.83	65.92	51.95	54.57	59.14
Truman, MN	Mod SCN	49.52	47.30	45.40	45.25	42.33
Janesville, WI	NO SCN	55.33	61.08	62.90	52.53	53.06
Franklin, MN	Mod SCN	53.92	47.99	48.74	52.67	47.31
<b>All Location Ave.</b>		<b>59.48</b>	<b>56.87</b>	<b>54.85</b>	<b>53.18</b>	<b>52.07</b>

## **Yield Results From Farmer Superstrip Test Plots**

2006 "Superstrip" Dealer Strip Trials - Group F

	<b>L2038R</b>	<b>L1401RX</b>	<b>L1783R</b>	<b>L1838R</b>	<b>E2085R</b>
Westby, WI	53.40	47.80	47.40	51.90	52.60
Lake Park, IA	59.80	51.40	50.50	57.10	58.40
Riceville, IA	49.30	37.00	41.10	49.70	49.60
Forest City, IA	67.60	47.10	55.50	65.70	63.30
Hendricks, MN	52.50	48.80	47.30	51.10	53.00
SleepyEye, MN	65.40	52.20	59.20	68.00	65.50
Sanborn MN	56.20	46.10	49.00	52.70	55.30
Hanska, MN	69.00	X	56.40	67.00	71.70
Mt. Lake MN	64.20	54.20	57.30	63.40	X
<b>All Location Ave.</b>	<b>59.71</b>	<b>48.08</b>	<b>51.52</b>	<b>58.51</b>	<b>58.68</b>

## **Positioning and Management**

L2038R is the #1 selling soybean in the Latham lineup. It carries strong SCN tolerance and works in all row widths. It has good stress tolerance for lighter soils and a great defensive package for heavier ground. While it rates a very good score for Iron Chlorosis tolerance, avoid those fields with a history of severe IDC.

---

### **Technical Information**

1. All Rating Scales are 1 to 5; (1 = Excellent, 5 = Poor)

2. Phytophthora Root Rot Race Resistance. Resistant varieties carry the major gene reported to be resistant to these races:

Rps1-a:	1,2,10,11,13,15-18,24,26,27
Rps1-c:	1-3,6-11,13,15,17,21,23,24,26
Rps1-k:	1-11,13-15,17,18,21,22,24,26
Rps3:	1-5,8,9,11,13,14,16,18,23,25
Rps6:	1-4,10,12,14-16,18-21,25

3. Phytophthora Field Tolerance: Although not race specific resistance, this offers general protection against serious infection.

4. Soybean Cyst Nematode Resistance - Varieties containing these genes are resistant to the following races of Soybean Cyst Nematode:

CystX	All known races
PI88788	3,6,8,9,10,12,13,14
Peking	1,3,5,6,7,8,10,15