

# LATHAM L1950R

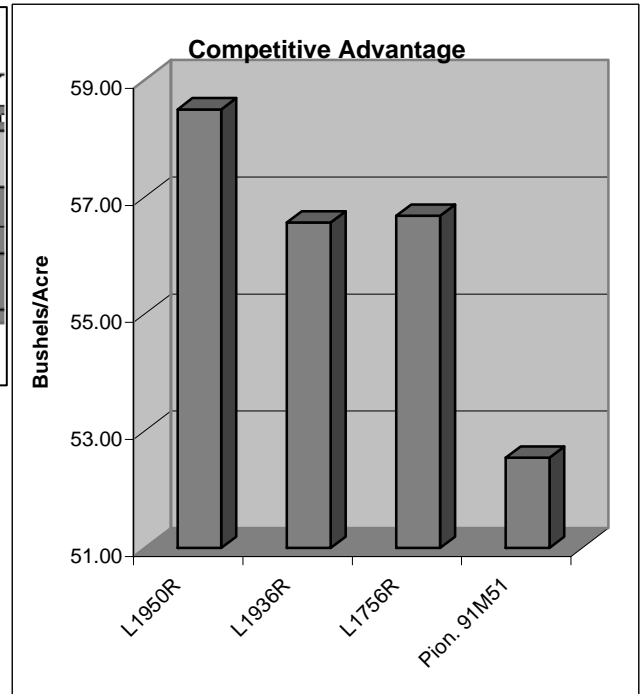
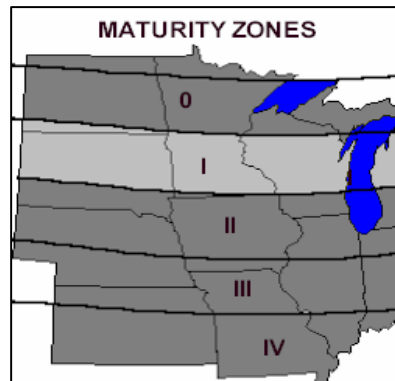
**NEW!**

Brand Soybeans

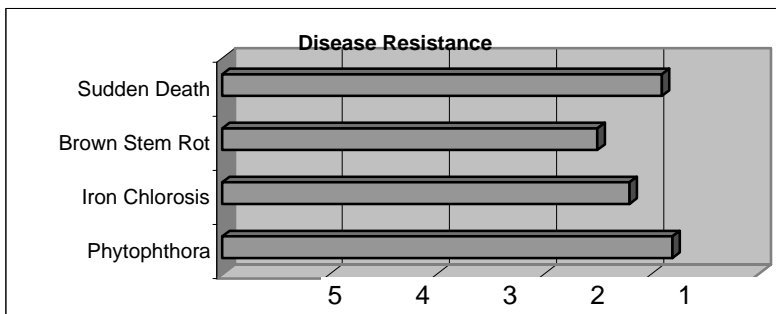
Released 2007

## Top Qualities

- Late Group I
- Superior Yields
- K-gene for Phytophthora
- Superior Yields
- Companion Line To L1936R
- Good Iron Chlorosis Tolerance



Yield data was obtained from Latham replicated research trials



## General Highlights

L1950R is an experimental line that is extremely high yielding. It also has a good defensive package including the K gene for Phytophthora and very good Iron Chlorosis Tolerance

## Characteristics and Disease Resistance:

Maturity:	1.9	Phytophthora Resistance:	1k
Flower Color:	White	Phytophthora Tolerance:	1.8
Pubescence:	Tawny	Iron Chlorosis:	2.2
Pod Color:	Tan	Brown Stem Rot:	2.5
Hilum Color:	Black	White Mold Tolerance:	N/A
Plant Height:	Medium-Tall	Sudden Death Syndrome:	1.9
Plant Type:	Medium	Stress Tolerance:	1.7
Emergence:	1.5	Shatter Resistance:	N/A
Standability:	1.9	Row Width:	All
Soil Type:	All	No-till Suitability:	1.8
Protein Content:	N/A	SCN Gene Resistance:	----
Oil Content:	N/A	SCN Tolerance Rating:	----



## Research and Development

Yield in Bushels Per Acre: Each location represents a 3-replication test.  
Latham Seed Company operates one of the largest and most comprehensive soybean research farms in the upper Midwest.

### **2006 (Test 911)**

	<b>L1950R</b>	<b>L1936R</b>	<b>L1756R</b>	<b>AG1702</b>	<b>Pion. 91M51</b>
Alexander, IA	73.37	72.70	69.95	64.85	62.36
Truman, MN	39.43	46.20	46.40	47.92	37.79
Bird Island, MN	58.04	51.53	51.06	53.96	59.64
Janesville, WI	63.14	55.81	59.30	58.35	50.38
<b>All Location Average</b>	<b>58.50</b>	<b>56.56</b>	<b>56.68</b>	<b>56.27</b>	<b>52.54</b>

## Yield Results From Dealer Superstrip Test Plots

### 2006 "Superstrip" Farmer Strip Trials

	<b>L1950R</b>	<b>L1553R</b>	<b>L1756R</b>	<b>L1936R</b>	<b>L2136R</b>
Rubicon, WI	62.60	67.10	63.90	62.10	70.10
West Bend, WI	52.00	52.30	51.00	57.80	60.40
Beaver Dam, WI	53.20	62.50	54.80	54.30	51.10
Westby, WI	49.90	53.20	43.70	44.10	51.10
Winona, MN	59.60	61.10	61.20	63.20	64.60
Mountain Lake, MN	55.20	46.80	52.50	56.80	59.10
Montevideo, MN	39.90	37.90	42.60	40.00	38.40
Heron Lake, MN	37.50	26.00	35.70	25.90	39.70
SleepyEye, MN	56.30	50.10	59.10	54.60	56.30
Alden, MN	47.80	38.90	45.20	44.70	46.20
Floyd, IA	52.80	52.60	52.40	55.00	57.10
Corunna, MI	38.50	35.00	31.00	37.80	29.60
<b>All Location Average</b>	<b>50.44</b>	<b>48.63</b>	<b>49.43</b>	<b>49.69</b>	<b>51.98</b>

## Positioning and Management

The new L1950R is a gorgeous tawny, tan soybean line that has shown exceptional yield over the past three years in research trials. It branches laterally, giving it more of a "wide" appearance, and therefore does well in all row widths. It is taller than our L1936R, has better Sudden Death Syndrome tolerance, and better stress tolerance making it an excellent companion soybean to the L1936R. An excellent choice for South Dakota, southern Minnesota, Wisconsin and the northern part of Iowa.

---

### Technical Information

1. All Rating Scales are 1 to 5; (1 = Excellent, 5 = Poor)

2. Phytophthora Root Rot Race Resistance. Resistant varieties carry the

major gene reported to be resistant to these races:

Rps1-a:	1,2,10,11,13,15-18,24,26,27
Rps1-c:	1-3,6-11,13,15,17,21,23,24,26
Rps1-k:	1-11,13-15,17,18,21,22,24,26
Rps3:	1-5,8,9,11,13,14,16,18,23,25
Rps6:	1-4,10,12,14-16,18-21,25

3. Phytophthora Field Tolerance: Although not race specific resistance, this offers general protection against serious infection.

4. Soybean Cyst Nematode Resistance - Varieties containing these genes are resistant to the following races of Soybean Cyst Nematode:

CystX	All known races
PI88788	3,6,8,9,10,12,13,14
Peking	1,3,5,6,7,8,10,15