

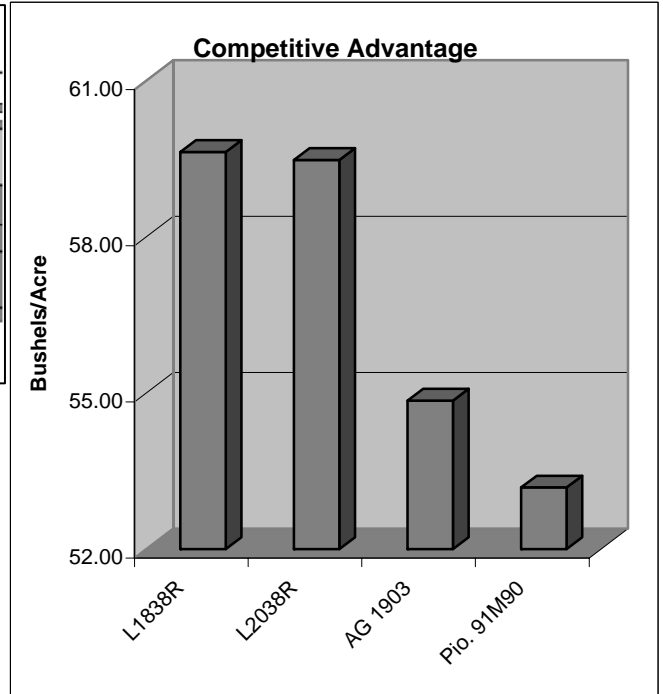
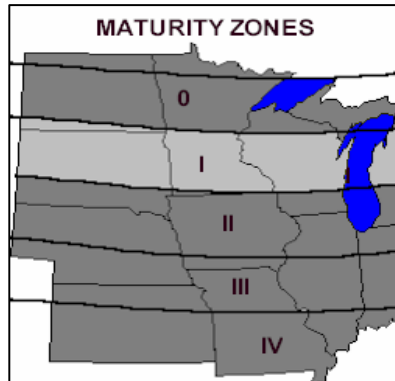
LATHAM L1838R

Brand Soybeans

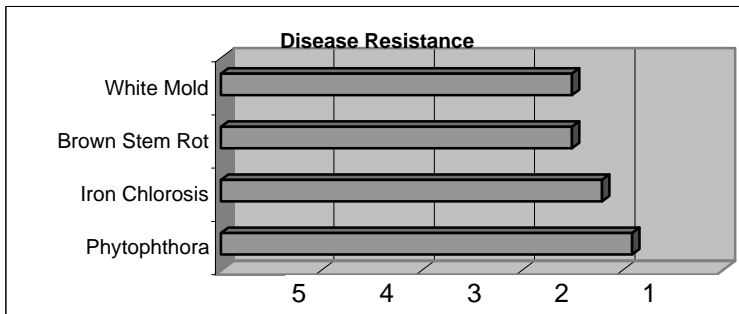
Released 2006

Top Qualities

- Late Group I
- Sister To L2038R
- K-gene for Phytophthora
- Great Iron Chlorosis Tolerance
- Emerges Well, Fast Early Growth
- Good All Around Disease Package



Yield data was obtained from Latham replicated research trials



General Highlights

L1838R is an earlier sister to L2038R. It has the same defensive characteristics and is slightly better on Iron Chlorosis.

Characteristics and Disease Resistance:

Maturity:	1.8	Phytophthora Resistance:	1k
Flower Color:	Purple	Phytophthora Tolerance:	1.9
Pubescence:	Gray	Iron Chlorosis:	2.2
Pod Color:	Tan	Brown Stem Rot:	2.5
Hilum Color:	Imp. Black	White Mold Tolerance:	2.5
Plant Height:	Medium	Sudden Death Syndrome:	N/A
Plant Type:	Medium	Stress Tolerance:	1.5
Emergence:	1.5	Shatter Resistance:	2.0
Standability:	2.0	Row Width:	All
Soil Type:	All	No-till Suitability:	1.8
Protein Content:	N/A	SCN Gene Resistance:	PI88788
Oil Content:	N/A	SCN Tolerance Rating:	2.1



Research and Development

Yield in Bushels Per Acre: Each location represents a 3-replication test.

Latham Seed Company operates one of the largest and most comprehensive soybean research farms in the upper Midwest.

2006 Research Testing

		L1838R	E2085R	L2038R	AG 1903	Pio. 91M90
Alexander, IA	Low SCN	67.70	73.60	68.80	65.28	60.90
Whittemore, IA	Mod SCN	63.25	74.18	69.83	51.95	54.57
Truman, MN	Low SCN	50.62	49.09	49.52	45.40	45.25
Janesville, WI	No SCN	52.49	64.64	55.33	62.90	52.53
Franklin, MN	Low SCN	64.11	51.73	53.92	48.74	52.67
All Location Average		59.63	62.65	59.48	54.85	53.18

Yield Results From Farmer Superstrip Test Plots

2006 "Superstrip" Dealer Strip Trials

	L1838R	L1783R	L2038R	E2085R	E1885R
Westby, WI	51.90	47.40	53.40	52.60	56.60
Lake Park, IA	57.10	50.50	59.80	58.40	59.10
Riceville, IA	49.70	41.10	49.30	49.60	45.60
Forest City, IA	65.70	55.50	67.60	63.30	58.50
Hendricks, MN	51.10	47.30	52.50	53.00	50.40
SleepyEye, MN	68.00	59.20	65.40	65.50	66.20
Sanborn, MN	52.70	49.00	56.20	55.30	52.70
Hanska, MN	67.00	56.40	69.00	71.70	64.50
All Location Ave.	57.90	50.80	59.15	58.68	56.70

Positioning and Management

L1838R is an early sister to L2038R. It has the same performance but it is two days earlier and has even better Iron Chlorosis Tolerance than its sister. Place it in your Cyst Nematode infected fields. Perfect for Minnesota.

Technical Information

1. All Rating Scales are 1 to 5; (1 = Excellent, 5 = Poor)

2. Phytophthora Root Rot Race Resistance. Resistant varieties carry the major gene reported to be resistant to these races:

Rps1-a: 1,2,10,11,13,15-18,24,26,27
Rps1-c: 1-3,6-11,13,15,17,21,23,24,26
Rps1-k: 1-11,13-15,17,18,21,22,24,26
Rps3: 1-5,8,9,11,13,14,16,18,23,25
Rps6: 1-4,10,12,14-16,18-21,25

3. Phytophthora Field Tolerance: Although not race specific resistance, this offers general protection against serious infection.

4. Soybean Cyst Nematode Resistance - Varieties containing these genes are resistant to the following races of Soybean Cyst Nematode:

CystX All known races
PI88788 3,6,8,9,10,12,13,14
Peking 1,3,5,6,7,8,10,15